

What will we be doing in and around Nijmegen's train station?

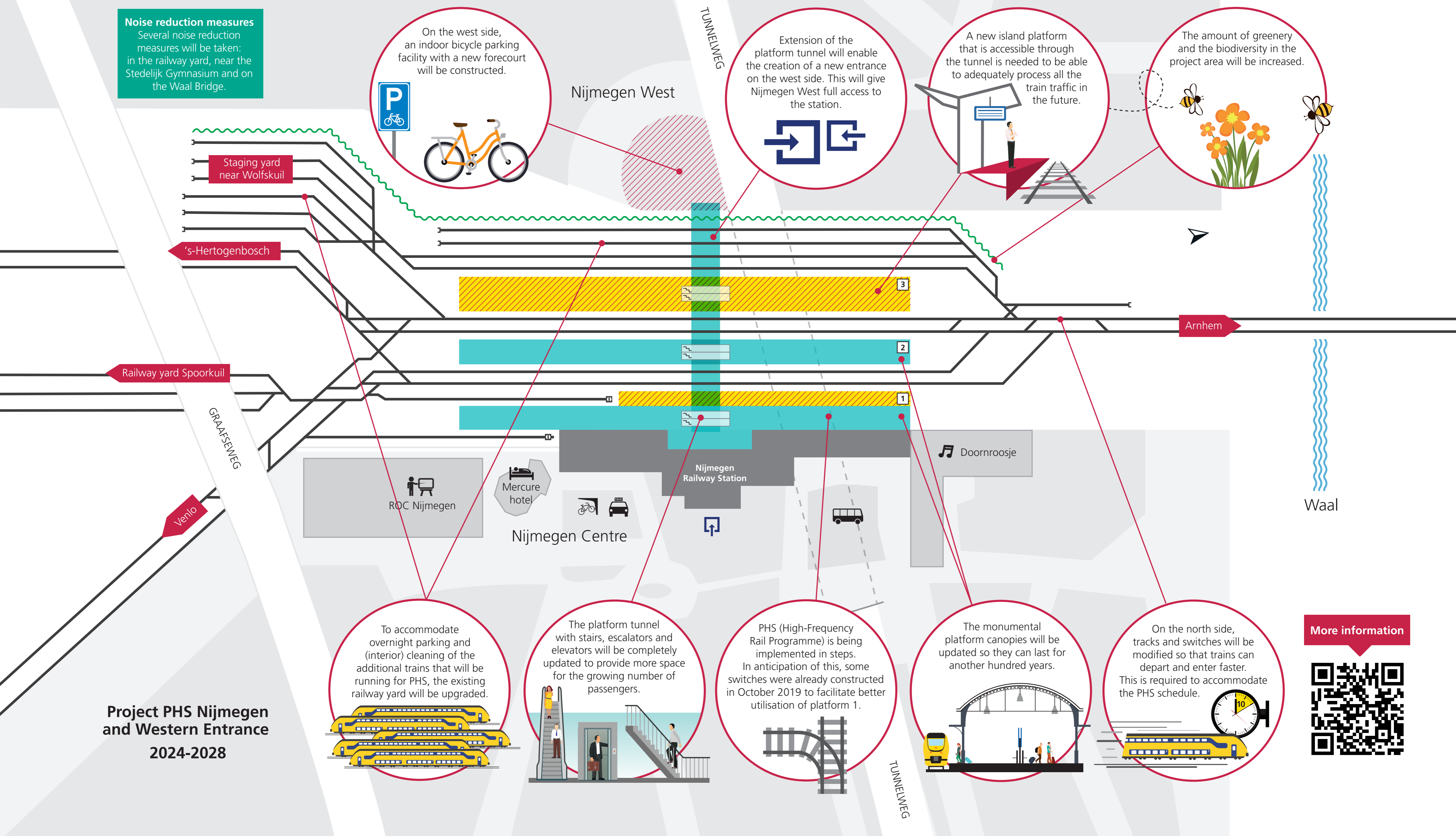
Noise reduction measures
 Several noise reduction measures will be taken: in the railway yard, near the Stedelijk Gymnasium and on the Waal Bridge.

On the west side, an indoor bicycle parking facility with a new forecourt will be constructed.

Extension of the platform tunnel will enable the creation of a new entrance on the west side. This will give Nijmegen West full access to the station.

A new island platform that is accessible through the tunnel is needed to be able to adequately process all the train traffic in the future.

The amount of greenery and the biodiversity in the project area will be increased.



To accommodate overnight parking and (interior) cleaning of the additional trains that will be running for PHS, the existing railway yard will be upgraded.

The platform tunnel with stairs, escalators and elevators will be completely updated to provide more space for the growing number of passengers.

PHS (High-Frequency Rail Programme) is being implemented in steps. In anticipation of this, some switches were already constructed in October 2019 to facilitate better utilisation of platform 1.

The monumental platform canopies will be updated so they can last for another hundred years.

On the north side, tracks and switches will be modified so that trains can depart and enter faster. This is required to accommodate the PHS schedule.

Project PHS Nijmegen and Western Entrance 2024-2028

More information

